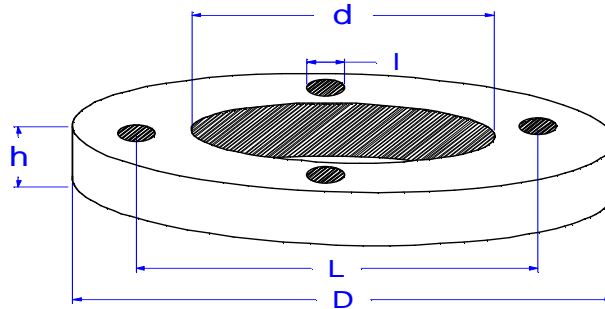
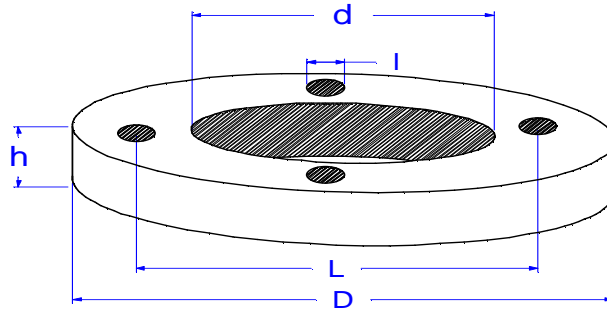


D	d	h	L	I	Form-Nr
35,0	18,0	8,0	26,0	4,0	D3-38
40,0	12,5	10,0	30,0	5,0	D4-38
40,0	8,0	10,0	20,0	6,0	D4-62
45,0	16,0	6,0	28,0	3,0	D4-51
50,0	7,0	7,0	35,0	7,0	D5-43
50,0	27,0	17,5	36,0	4,3	D5-51
52,0	16,0	6,0	28,0	3,0	D5-40
58,0	38,0	9,5	48,0	4,5	D5-42
61,0	40,0	12,0	50,0	4,3	D6-36
66,0	34,0	19,5	50,0	6,0	D6-34
70,0	25,0	10,0	46,0	10,0	D7-15
75,0	40,0	14,0	58,0	9,0	D7-33
78,0	-	18,0	50,0	6,0	D7-30
80,0	25,0	15,0	51,0	14,5	D8-32
80,0	30,0	14,0	55,0	12,0	D8-31
80,0	43,0	10,0	62,0	9,0	D8-34
80,0	46,0	30,0	62,0	7,0	D8-25
81,0	50,0	8,0	65,0	4,8	D8-36
85,0	28,0	14,0	55,0	14,0	D8-28
85,0	45,0	10,0	65,0	6,0	D8-33p
90,0	46,0	19,5	62,0	6,4	D9-26
90,0	46,0	35,5	62,0	6,5	D9-40
90,0	-	12,0	70,0	12,0	D9-31
92,0	25,0	12,0	63,0	15,0	D9-41
92,0	50,0	10,0	67,0	5,8	D9-30
95,0	30,0	20,0	80,0	10,0	D9-33
95,0	43,0	33,0	69,0	12,0	D9-34
95,0	50,0	10,0	75,0	6,5	D9-36p
95,0	50,0	10,0	75,0	6,5	D9-37p
96,0	25,0	10,0	65,0	14,0	D9-28
96,0	60,0	18,0	80,0	8,0	D9-12
98,0	25,0	11,0	68,0	12,5	D9-29
98,0	45,0	23,0	71,0	10,0	D9-39
99,0	40,0	10,0	70,0	12,0	D9-24
100,0	30,0	19,0	65,0	16,0	D9-35
100,0	32,0	16,0	70,0	17,0	D10-28
100,0	40,0	12,0	75,0	12,0	D10-24
102,0	29,0	20,0	70,0	15,5	D10-15
104,0	72,0	15,0	88,0	9,0	D10-26
105,0	40,0	20,0	75,0	16,0	D10-32
105,0	72,0	17,0	88,0	9,0	D10-23
110,0	35,0	10,0	76,0	7,0	D11-26
110,0	38,0	10,0	74,0	8,0	D11-9p



D	d	h	L	I	Form-Nr
110,0	39,0	10,0	73,0	4,0	D11-8p
110,0	40,0	16,0	80,0	12,0	D11-20
110,0	71,0	28,5	85,0	7,0	D11-21
110,0	80,0	17,0	93,0	5,0	D11-29
115,0	70,0	25,0	95,0	9,0	D11-24
119,0	31,0	10,0	80,0	6,0	D11-25p
120,0	40,0	14,0	81,0	17,0	D12-25
120,0	40,0	15,0	85,0	16,0	D12-27
120,0	45,0	14,0	84,0	16,0	D12-34
120,0	50,0	20,0	86,0	12,0	D12-11
120,0	62,0	10,0	90,0	8,0	D12-22
122,0	43,0	12,0	85,0	16,0	D12-21
124,0	56,0	8,0	94,0	7,5	D12-20
125,0	30,0	16,0	90,0	10,0	D12-29
130,0	37,0	27,0	90,0	18,0	D13-3
130,0	50,0	13,0	100,0	13,0	D13-9
132,0	50,0	10,0	65,0	7,0	D13-8
132,0	50,0	12,0	65,0	7,0	D13-10
132,0	54,0	10,0	80,0	16,0	D13-12
135,0	46,0	12,0	95,0	12,0	D13-5
140,0	40,0	10,0	110,0	16,0	D14-18
140,0	65,0	32,0	80,0	6,5	D14-20
140,0	86,0	10,0	115,0	8,5	D14-19
146,0	50,0	14,0	100,0	22,5	D14-13
146,0	42,0	10,0	120,0	16,0	D14-12
146,0	66,0	10,0	-	-	D14-5
150,0	40,0	10,0	95,0	6,5	D15-18p
150,0	50,0	14,0	100,0	23,0	D15-6
150,0	70,0	18,0	111,0	19,0	D15-13
151,0	71,0	14,0	112,0	17,0	D15-15
160,0	110,0	6,0	136,0	9,0	D16-4p
165,0	65,0	10,0	120,0	14,0	D16-5
175,0	80,0	40,0	130,0	24,0	D17-8
185,0	60,5	50,0	145,0	17,0	D18-11
185,0	69,0	30,0	135,0	27,0	D18-1
200,0	48,0	10,0	108,0	7,0	D20-5
210,0	90,0	25,0	170,0	20,0	D21-2
220,0	100,0	15,0	180,0	20,0	D22-6
220,0	144,0	18,0	175,0	10,0	D22-5
240,0	60,0	7,0	210,0	7,0	D24-5
250,0	120,0	24,0	206,0	22,0	D25-5
260,0	120,0	36,0	200,0	25,0	D26-8
280,0	120,0	20,0	200,0	35,0	D28-5



D	d	h	L	l	Form-Nr
285,0	-	15,0	240,0	25,0	D28-6
320,0	170,0	20,0	-	-	D32-1
332,0	240,0	8,0	265,0	8,0	D33-4
410,0	327,0	5,0	385,0	7,0	D41-2p