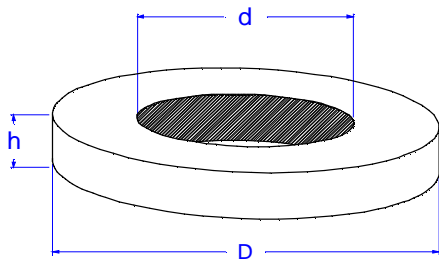
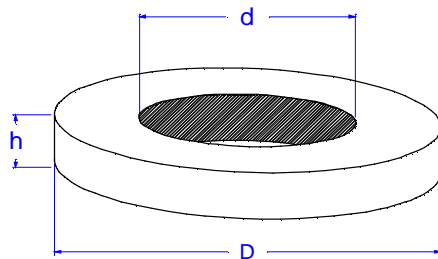


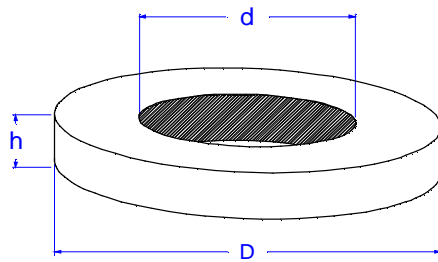
D	d	h	Form-Nr
10,0	5,5	7,0	FR1-2
12,0	4,0	14,5	FR1-3
18,5	7,0	3,0	FR1-5
18,5	14,5	12,0	FR1-4
24,0	4,0	4,5	FR2-5
25,0	21,0	5,0	FR2-3
28,0	5,0	5,0	FR2-6
28,0	18,0	4,5	FR2-4
35,0	21,0	5,0	FR3-6
35,0	26,0	4,0	FR3-4
35,0	27,0	3,0	FR3-3
38,0	14,0	8,0	FR3-2
39,0	28,0	7,0	FR3-5
41,0	35,0	10,0	FR4-8
45,0	13,5	5,0	FR4-7
50,0	25,0	6,0	FR5-9
50,0	25,0	8,0	FR5-8
50,0	25,0	10,0	FR5-7
50,0	28,0	11,0	FR5-10
50,0	40,0	8,0	FR5-11
54,0	28,0	6,0	FR5-5
55,8	22,3	8,0	FR5-6
56,0	45,0	6,0	FR5-1
57,0	45,0	6,0	FR5-2
58,0	43,0	6,0	FR5-4
60,0	11,0	20,0	FR6-2
60,0	14,0	18,0	FR6-1
72,0	38,0	4,0	FR7-1
74,0	22,0	18,0	FR7-7
75,0	18,0	19,0	FR7-8
75,0	40,2	5,0	FR7-5
80,0	12,0	30,0	FR8-10
80,0	22,0	17,0	FR8-8
81,5	57,5	32,5	FR8-4
83,0	17,0	10,0	FR8-7
83,0	75,0	7,0	FR8-3
85,0	22,0	17,0	FR8-9
86,0	64,0	4,0	FR8-1
90,0	15,0	5,0	FR9-5
90,0	28,0	15,0	FR9-8p
90,0	250,0	15,0	FR25-10
94,0	29,0	15,0	FR9-10
96,0	80,0	8,0	FR9-6
98,0	35,0	14,0	FR9-7



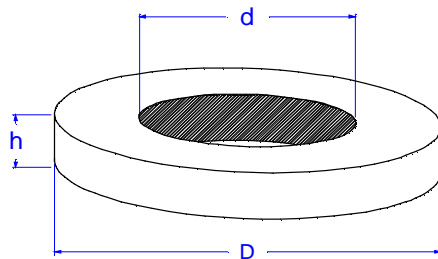
D	d	h	Form-Nr
99,0	22,0	8,0	FR9-9p
100,0	10,0	30,0	FR10-13
100,0	12,0	30,0	FR10-15
100,0	15,0	10,0	FR10-14
100,0	16,0	5,5	FR10-llp
100,0	16,0	15,0	FR10-1
100,0	75,0	14,0	FR10-6
102,0	90,0	8,0	FR10-11
103,0	35,0	14,0	FR10-10
105,0	39,5	25,0	FR10-12
105,0	40,0	8,0	FR10-8
105,0	70,0	10,0	FR10-5
110,0	40,0	20,0	FR11-9
110,0	98,0	5,0	FR11-8p
112,0	55,0	13,0	FR11-10
112,5	30,0	15,0	FR11-12
114,0	78,0	10,0	FR11-7
115,0	22,0	10,0	FR11-4
115,0	63,5	20,0	FRil-il
115,0	100,0	8,0	FR11-5
120,0	26,0	50,0	FR12-7
120,0	41,0	20,0	FR12-10
120,0	60,5	20,0	FR12-5
120,0	106,0	10,0	FR12-1
123,0	107,0	8,0	FR12-4
125,0	40,0	15,0	FR12-6
125,0	50,0	20,0	FR12-3
126,0	63,0	12,0	FR12-8
128,0	75,0	15,0	FR12-9
130,0	40,0	14,0	FR13-11
130,0	52,0	10,0	FR13-6
130,0	52,0	30,0	FR13-13
130,0	70,0	14,0	FR13-10
130,0	100,0	18,0	FR13-12
133,0	40,0	25,0	FR13-14
135,0	8,0	6,0	FR13-3
135,0	16,0	6,0	FR13-7p
135,0	66,0	12,0	FR13-5
135,0	75,0	10,0	FR13-4
138,0	120,0	10,5	FR13-1
140,0	62,0	10,0	FR14-7
140,0	80,0	10,0	FR14-l0p
140,0	90,0	10,0	FR14-5
140,0	125,0	8,0	FR14-4



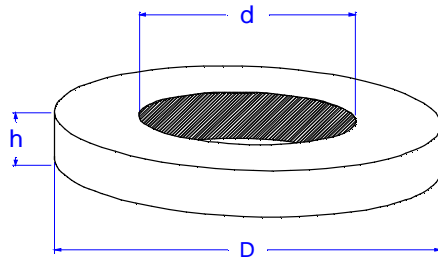
D	d	h	Form-Nr
140,0	130,0	5,0	FR14-1
143,0	123,0	10,0	FR14-8
145,0	40,0	10,0	FR14-13
145,0	45,0	12,0	FR14-9
145,0	63,0	10,0	FR14-12p
149,8	75,2	10,0	FR14-11
149,8	86,0	3,0	FR14-3
150,0	45,0	6,0	FR15-8
150,0	45,0	10,0	FR15-5
150,0	46,0	30,0	FRi5-il
150,0	51,0	10,0	FR15-6
150,0	66,0	8,0	FR15-4
150,0	70,0	6,0	FR15-1
150,0	86,0	10,0	FR15-7
150,0	95,0	10,0	FR15-2
151,0	139,5	17,0	FR15-9
152,0	70,0	20,0	FR15-10
155,0	13,0	8,0	FR15-3p
160,0	20,0	13,0	FR16-14
160,0	52,0	15,0	FR16-9
160,0	60,0	12,0	FR16-8
160,0	62,0	10,0	FR16-3
160,0	74,0	15,0	FR16-7p
160,0	79,0	15,0	FR16-13
160,0	95,0	30,0	FR16-11
160,0	107,0	30,0	FR16-10
160,0	130,0	30,0	FR16-12
163,5	132,0	14,0	FR16-1
164,0	134,0	14,0	FR16-5
165,0	16,0	8,0	FR16-6p
165,0	155,0	9,0	FR16-2
167,0	147,0	10,0	FR16-4
170,0	53,0	15,0	FR17-8
170,0	60,0	20,0	FR17-12
170,0	82,0	13,0	FR17-9
170,0	110,0	9,0	FR17-13
170,0	120,0	10,0	FR17-4
170,0	150,0	10,0	FR17-3
170,0	155,0	11,0	FR17-2
171,0	100,0	10,0	FR17-5
172,0	90,0	20,0	FR17-14
173,0	144,0	5,0	FR17-10
174,0	90,2	15,0	FR17-15
174,0	102,0	20,0	FR17-7



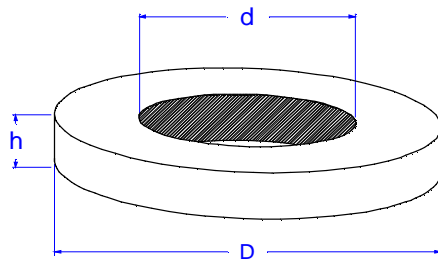
D	d	h	Form-Nr
175,0	52,0	15,0	FR17-6
175,0	70,0	20,0	FR17-1
175,0	75,0	10,0	FR17-11
179,8	90,2	15,0	FR17-16
180,0	60,5	15,0	FR18-10
180,0	66,0	15,0	FR18-13
180,0	91,0	35,0	FR18-7
180,0	95,0	7,0	FR18-12
180,0	100,0	10,0	FR18-11
180,0	114,0	20,0	FR18-4
180,5	150,0	10,5	FR18-5
181,5	146,0	5,0	FR18-8
184,0	104,0	10,0	FR18-6
185,0	13,0	8,0	FR18-9
190,0	60,0	20,0	FR19-3
190,0	60,0	40,0	FR19-8
190,0	62,0	10,0	FR19-4
190,0	150,0	12,0	FR19-5
190,0	184,0	25,0	FRI9-2
192,0	144,0	8,0	FRI9-7
193,0	52,0	15,0	FR19-6
195,0	175,0	57,0	FR19-1
198,0	168,0	25,0	FR19-9
200,0	40,0	15,0	FR20-11
200,0	45,0	12,0	FR20-7
200,0	60,0	10,0	FR20-5
200,0	82,0	20,0	FR20-8
200,0	120,0	20,0	FR20-9
200,0	145,0	7,0	FR20-10
200,0	150,0	12,0	FR20-2
200,0	175,0	15,0	FR20-6
202,0	110,0	20,0	FR20-13
204,0	146,0	8,0	FR20-4
205,0	135,0	14,0	FR20-12
208,0	145,0	41,0	FR20-3
210,0	21,0	8,0	FR21-5p
210,0	25,0	13,0	FR21-10
210,0	80,0	12,0	FR21-6
210,0	82,0	10,0	FR21-3
210,0	120,0	8,0	FR21-2
210,0	121,0	10,0	FR21-9
210,0	130,0	12,0	FR21-7
210,0	175,0	7,0	FR21-4
210,0	195,0	13,0	FR21-1



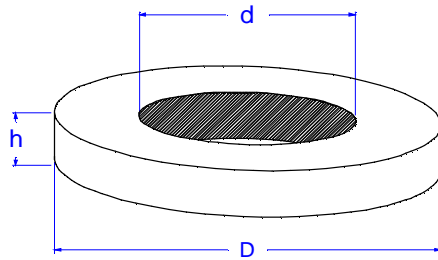
D	d	h	Form-Nr
215,0	163,0	13,0	FR21-8
220,0	15,0	12,0	FR22-8
220,0	120,0	20,0	FR22-4
220,0	138,0	15,0	FR22-10
220,0	165,0	10,0	FR22-6p
225,0	145,0	30,0	FR22-7
225,0	185,0	20,0	FR22-5
226,0	82,0	40,0	FR22-3
226,0	100,0	18,0	FR22-9
229,0	140,0	12,0	FR22-1
230,0	21,0	8,0	FR23-2p
230,0	160,0	13,0	FR23-1
230,0	190,0	20,0	FR23-3
232,0	130,0	20,0	FR23-5
236,0	206,0	10,0	FR23-4
242,0	224,0	9,5	FR24-3
245,0	200,0	16,0	FR24-2
246,0	227,0	4,0	FR 24-1 p
250,0	112,0	8,0	FR25-7
250,0	115,0	10,0	FR25-2
250,0	180,0	25,0	FR25-8
250,0	200,0	5,0	FR25-3
250,0	200,0	16,0	FR25-4
250,0	225,0	15,0	FR25-6
252,0	160,0	20,0	FR25-9
255,0	223,0	16,0	FR25-5
258,0	235,0	8,0	FR25-1
260,0	102,0	10,0	FR26-2
260,0	230,0	12,0	FR26-3
265,0	175,0	28,0	FR26-1
270,0	15,0	12,0	FR27-7
270,0	195,0	25,0	FR27-10
270,0	210,0	12,0	FR27-8
270,5	255,5	20,0	FR 27-6
273,0	203,0	5,0	FR27-4
274,0	215,0	5,0	FR27-5
274,0	250,0	12,0	FR27-1
275,0	12,0	8,0	FR27-2p
275,0	60,1	12,0	FR27-3
275,0	220,0	12,0	FR27-9
275,0	325,0	20,0	FR32-6
280,0	60,0	12,0	FR28-2
280,0	150,0	20,0	FR28-6
280,0	200,0	20,0	FR28-1



D	d	h	Form-Nr
280,0	240,0	20,0	FR28-8
285,0	27,0	10,0	FR28-4p
285,0	85,0	10,0	FR28-3
285,0	220,0	15,0	FR28-9
286,0	250,0	8,0	FR28-5
288,0	215,0	9,0	FR28-7p
292,0	180,0	20,0	FR29-2
295,0	265,0	15,0	FR29-1
300,0	285,0	12,0	FR30-2
302,0	210,0	20,0	FR30-4
304,0	290,0	5,0	FR30-1
306,0	215,0	15,0	FR30-3p
310,0	180,0	52,0	FR31-3
310,0	216,0	6,0	FR31-1
310,0	240,0	10,0	FR31-5
312,0	240,0	20,0	FR31-7
313,0	290,0	8,0	FR31-2
315,0	250,0	15,0	FR31-6
319,0	265,0	21,0	FR31-8
319,5	280,5	7,0	FR31-4
320,0	190,0	12,0	FR32-3
320,0	295,0	12,5	FR32-4
320,0	300,0	15,0	FR32-5
321,0	299,0	14,0	FR32-1
324,0	300,0	12,0	FR32-2
334,5	320,0	20,0	FR33-2
335,0	325,0	5,0	FR33-1
340,0	33,0	10,0	FR34-2p
340,0	260,0	28,0	FR34-3
340,0	300,0	10,0	FR34-1
350,0	200,0	10,0	FR35-1
350,0	303,0	45,0	FR35-2
360,0	45,0	20,0	FR36-2
360,0	346,0	5,0	FR36-1
364,0	317,0	28,0	FR36-3
370,0	214,0	6,0	FR37-2
374,0	350,0	12,0	FR37-1
380,0	282,0	15,0	FR38-5
380,0	340,0	5,0	FR38-4
380,0	341,0	6,0	FR38-3
380,0	360,0	15,0	FR38-8
380,0	368,0	23,0	FR38-2
383,0	360,0	12,0	FR38-1
385,0	275,0	15,0	FR38-6



D	d	h	Form-Nr
385,0	275,0	20,0	FR38-7
395,0	260,0	5,0	FR39-2
395,5	330,0	5,0	FR39-1
400,0	80,0	40,0	FR40-2
400,0	320,0	60,0	FR40-3
400,0	350,0	5,0	FR40-5
400,0	363,0	25,5	FR40-4
400,0	369,0	25,0	FR40-7
408,0	247,0	2,0	FR40-1
408,0	372,0	30,0	FR40-6
410,0	200,0	10,0	FR41-1
410,0	355,0	20,0	FR41-3
412,0	280,0	56,0	FR41-2
424,0	400,0	12,0	FR42-1
428,0	400,0	12,0	FR42-2
429,0	370,0	12,0	FR42-3p
438,0	315,0	13,0	FR43-1
440,0	43,0	12,0	FR44-lp
440,0	350,0	90,0	FR44-2
440,0	420,0	14,0	FR44-3
450,0	255,0	40,0	FR45-2
450,0	410,0	18,0	FR45-1
465,0	447,0	22,0	FR46-1
470,0	420,0	10,0	FR47-1
480,0	360,0	25,0	FR48-2
484,0	296,0	2,0	FR48-1
490,0	345,0	10,0	FR49-1
490,0	470,0	15,0	FR49-2
500,0	100,0	30,0	FR50-1
508,0	350,0	15,0	FR50-2
510,0	490,0	10,0	FR51-1
520,0	390,0	65,0	FR52-1
526,0	494,0	20,0	FR52-2
530,0	500,0	15,0	FR53-1
540,0	375,0	5,0	FR54-1
550,0	490,0	15,0	FR55-2
550,0	500,0	5,0	FR55-1
560,0	542,0	22,0	FR56-2
563,0	450,0	20,0	FR56-3
565,0	400,0	5,0	FR56-1
585,0	521,0	2,0	FR58-1
600,0	500,0	5,0	FR60-1
625,0	300,0	5,0	FR62-2
629,0	411,0	2,0	FR62-1



D	d	h	Form-Nr
670,0	494,0	5,0	FR67-2
670,0	500,0	5,0	FR67-1
680,0	620,0	5,0	FR68-2
684,0	635,0	16,0	FR68-1
700,0	510,0	60,0	FR70-1
718,0	640,0	15,0	FR71-1
725,0	380,0	5,0	FR72-1
755,0	600,0	5,0	FR75-1
780,0	600,0	5,0	FR78-1
810,0	770,0	20,0	FR81-1
830,0	790,0	20,0	FR83-2
838,0	810,0	5,0	FR83-1
858,0	830,0	5,0	FR85-1
880,0	775,0	4,0	FR88-1
895,0	700,0	5,0	FR89-1
940,0	900,0	20,0	FR94-1
950,0	750,0	5,0	FR95-1
1000,0	695,0	2,0	FR100-1
1015,0	800,0	5,0	FR100-2
1115,0	900,0	5,0	FR110-1
1197,0	1112,0	10,0	FR119-1
1240,0	920,0	30,0	FR120-1
1250,0	920,0	15,0	FR120-2
1300,0	1230,0	10,0	FR130-1
1300,0	1240,0	10,0	FR130-2